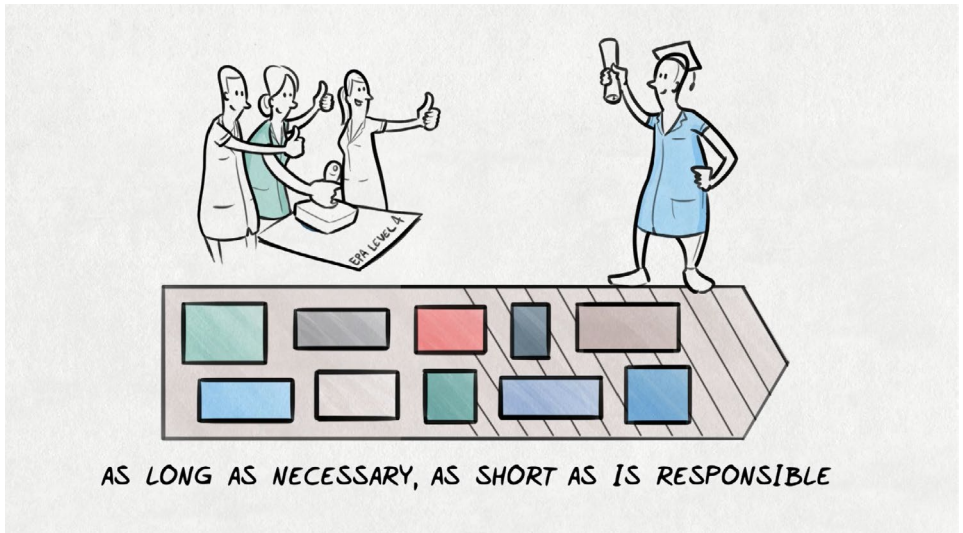


INDIVIDUALISING POSTGRADUATE MEDICAL TRAINING

using **ENTRUSTABLE PROFESSIONAL ACTIVITIES**
and **SUMMATIVE ENTRUSTMENT DECISIONS**



In the Netherlands competency-based postgraduate medical training has been redesigned with entrustable professional activities (EPAs) and summative entrustment decisions¹ to be more individual and flexible. This presentation shows animations and tools used in the project.

Background

In 2013, the Dutch Ministry of Health, Welfare and Sports came to an agreement with the consortium of all University Medical Centres and other Teaching Hospitals to redesign the general structure of postgraduate medical training, which is predominantly financed through government funding.

In order to realize individualization, the principle of a fixed training time of postgraduate medical training has been left in the Netherlands. The legislation has been adjusted accordingly. This redesign includes more flexible, individualized and competency-based pathways.

1. Ten Cate e.a. AMEE Guidelines for Competency-based Workplace Curriculum Development based on Entrustable Professional Activities – a Matrix Mapping Approach Medical Teacher. 2015.

EPA's as a backbone structure for training programmes

To arrive at this objective, entrustable professional activities and their certification through summative entrustment decisions for decreasing levels of supervision, have been proposed as a major backbone structure for all programs.

Since 2015 all programs have been exploring this model, assisted by a national government funded project Individualising Postgraduate Medical Training. This project is executed by the Dutch Association of Medical Specialists. Supported by a team of several educationalists, almost all medical specialities in the Netherlands are rebuilding their curriculum and training methods using mainly EPA's as building blocks.

Tools for implementation

Meetings, workshops and master classes have been organized to provide explanations about all related concepts and to gain support among clinical teachers and residents. There's a supportive website where one can download several tools and job-aids. Recently animated videos which help to clarify the new concept, have been added to the toolbox. Two videos have been translated in English and constitute the major part of this presentation.

Results

At this moment three medical specialities are testing EPA-based learning and summative entrustment decision-making in practice. The project is monitoring these trials and by the end of 2016 the results will be presented. This will help other specialities to learn and to optimize their flexible, individual and EPA-based curriculum.

DO YOU WANT TO KNOW MORE?

Check: www.medischevervolgopleidingen.nl/individualisation

Contact:

- **Marieke Bolk** MSc (Educationalist, Dutch Association of Medical Specialists):
m.bolk@demedischespecialist.nl | 0031-650592669
- **Auk Dijkstra** MSc (Educationalist, Dutch Association of Medical Specialists):
a.dijkstra@demedischespecialist.nl | 0031-652073763
- **Marieke van der Horst** MSc (Educationalist, Dutch Association of Medical Specialists):
m.vanderhorst@demedischespecialist.nl | 0031-649757787



**Federatie
Medisch
Specialisten**